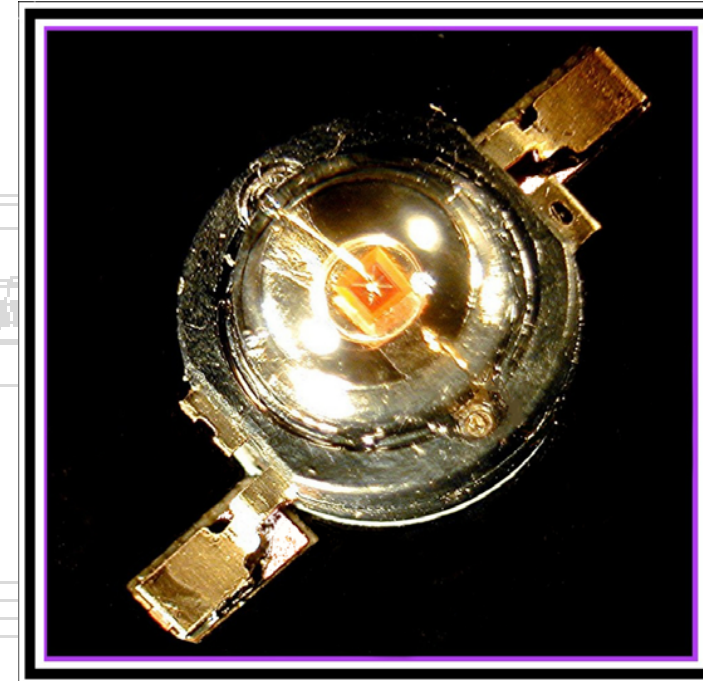


AccuMill HB

Specifications



- **XY Gantry:** High performance Linear motors w/ linear encoders
- **Maximum Output:** soldering 1500 CP/H (batch) to 30,000 CP/H (inline)
- **Accuracy:** 4 μ M (Microns)
- **PCB Dimensions:** Min 25mm x 25mm / 1" x 1"
Max 1000mm x 2000mm / 39"x 78"
- **MTTR:** > 8 hrs Typical
- **MTBF:** > 20,000hrs
- **User Interface:** Windows XP based GUI
- **Soldering head force:** Adjustable
- **Soldering Tips:** Coaxial/ long life/ high thermal recovery alloy
- **Temperature Control:** +/- 1.5° C
- **Programming** CAD/DXF/Gerber/G-Code input included



AccuMill HB

Luxeon® Hot Bar soldering

* All designs are covered by international patent pending

* Due to constant product improvement and development the above specifications are subject to change without prior notice

• Trade Mark of Lumileds Lighting, LLC

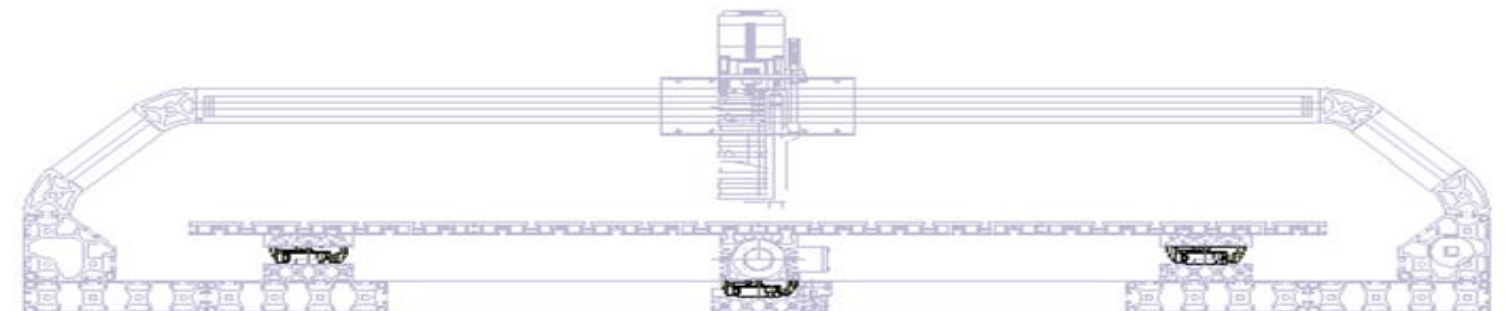


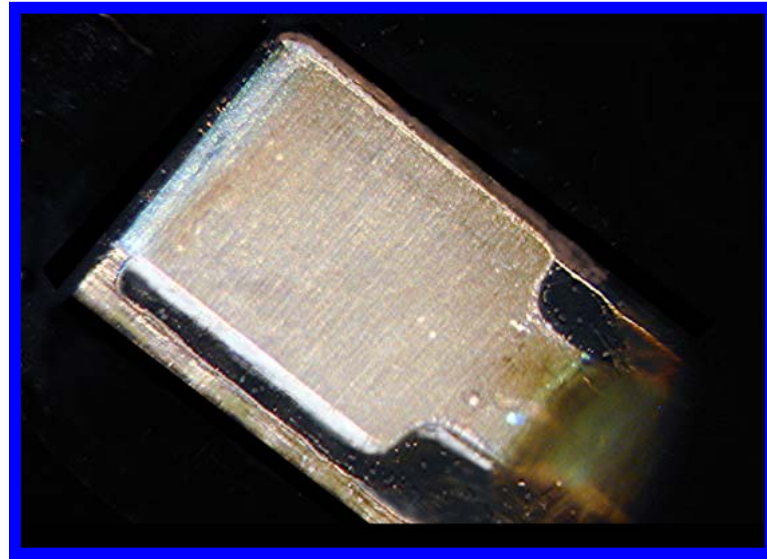
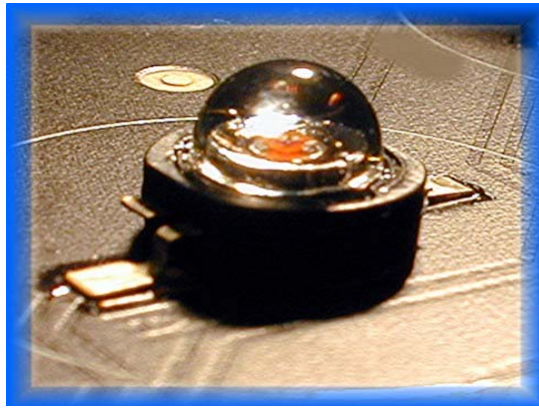
automationsystems.com eng@automationsystems.com

30 WHITE SWAN ROAD, BRANTFORD, ONTARIO, CANADA N3T 5L4

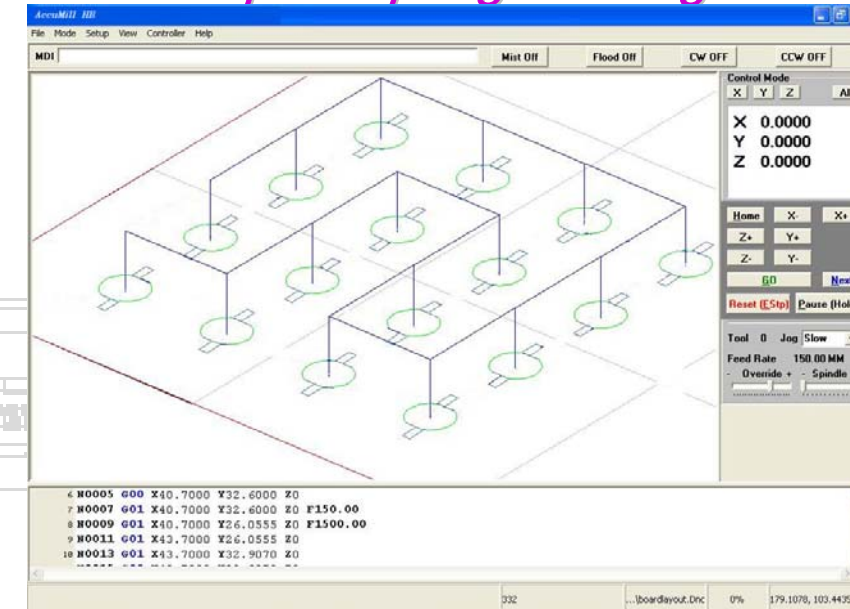
TELEPHONE: (519) 770-4012

FAX: (519) 770-4014





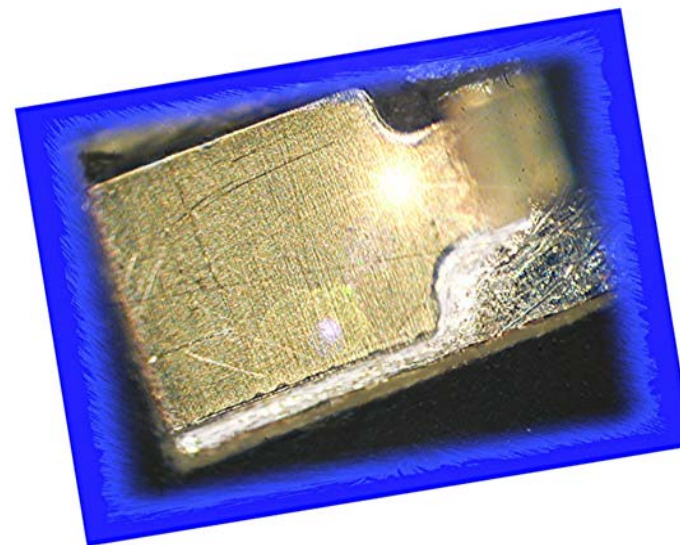
Powerful Graphic programming interface



AccuMill HB

Features

- Exceptional, consistent soldering quality
- High volume placement 30K cph/soldering
- Repeatable process
- Low maintenance, high reliability linear motor option
- Standard active areas up to 1000mm x 2000mm / 39"x 78"
- Ease of programming
- Flexible user configuration
- Modular platform
- Dynamic multi height placement, 3" typical
- High Throughput / Co-axial hot bar design
- Automated hot bar maintenance option
- Inline or batch configurations
- Multiple dispenser capability
- Test on the Fly or test nest capabilities
- Bottom board heater capability
- Flexible work fixturing
- High placement accuracy
- All options are field upgradeable
- "No Lead" process ready



ASC provides a complete Luxeon® process solution with exceptional technology.

The AccuMill HB was designed to optimize parallel processing with scalability and flexibility.

Modules

- Dispensing
- Test nest
- Pick and Place
- Multi-Head / Multi Gantry

